



THE COMPANY PROFILE

www.texcalenergy.com

TABLE OF **CONTENT**

- About Company
- Welcome Message
- Meet Our Team
- Our Vision & Mission
- Our Operations
- Our Journey
- Our Communities Programmes
- Contact Us



ABOUT COMPANY

Texcal Energy assets include existing primary production in the Mahato PSC, as well as highly prospective areas close to large producing Oil and Gas fields in the Bohorok PSC and soon started exploration activity in Bengara I Working Area.

We are actively engaged in the exploration and exploitation of oil and gas in partnership with the Government of the Republic of Indonesia and National Oil Company, Pertamina. Our operations are planned to deliver safe, optimal, efficient and effective solutions in an environmentally safe manner.

"Texcal Energy Acreage covers highly prospective areas adjacent to, and on trend with several major Oil and Gas Fields"



Ibrahim Attereh
"CEO of Company"

WELCOME MESSAGE

"It is essential to establish and actualize our Company's strategic policies which include basic scenarios of managing the Work Area, Development and Operations.

We are very committed to ensure flawless, safe and carbon emission reduced operations while maintaining continuous improvement effort to maximize profitability through effective, efficient, safe and environmentally friendly oil and gas activities.

We also emphasize our talent capability building to ensure we can reach greater heights of success locally and globally."



OUR VISION MISSION

VISION

We strive to be a company with great local knowledge adhering to International Standards and quality, and to become a highly respected and reliable energy provider within Indonesia. We are accomplishing our mission through a well established and robust corporate culture and a highly talented, culturally diverse pool of expertise who are focused on quality, safety, delivery, integrity and compliance.

MISSION

Texcal Energy has a mission of being a best in class Energy Provider and Operator. Trusted and respected in the areas we operate and recognised regionally and Internationally as a company that is professional, where safety, integrity, ethics, compliance, corporate social responsibility and quality of product and operations are of paramount importance.



MEET OUR TEAM



MOHAMAD TARMIZI

VP Operations



ANDRE EMIRAJA

VP Drilling



KHAERUL MUTAQQIN

VP Subsurface



VIQI KURNIAWAN

VP HSSE



YUNITA WIDIYAWATI

VP HR



DWI AGUNG N.

Chief Financial
Officer



VANDA TRIVOLIA

VP GA & IT



CHOLIQ TRIANANTA

VP PSCM



WISNU RIZKIAWAN

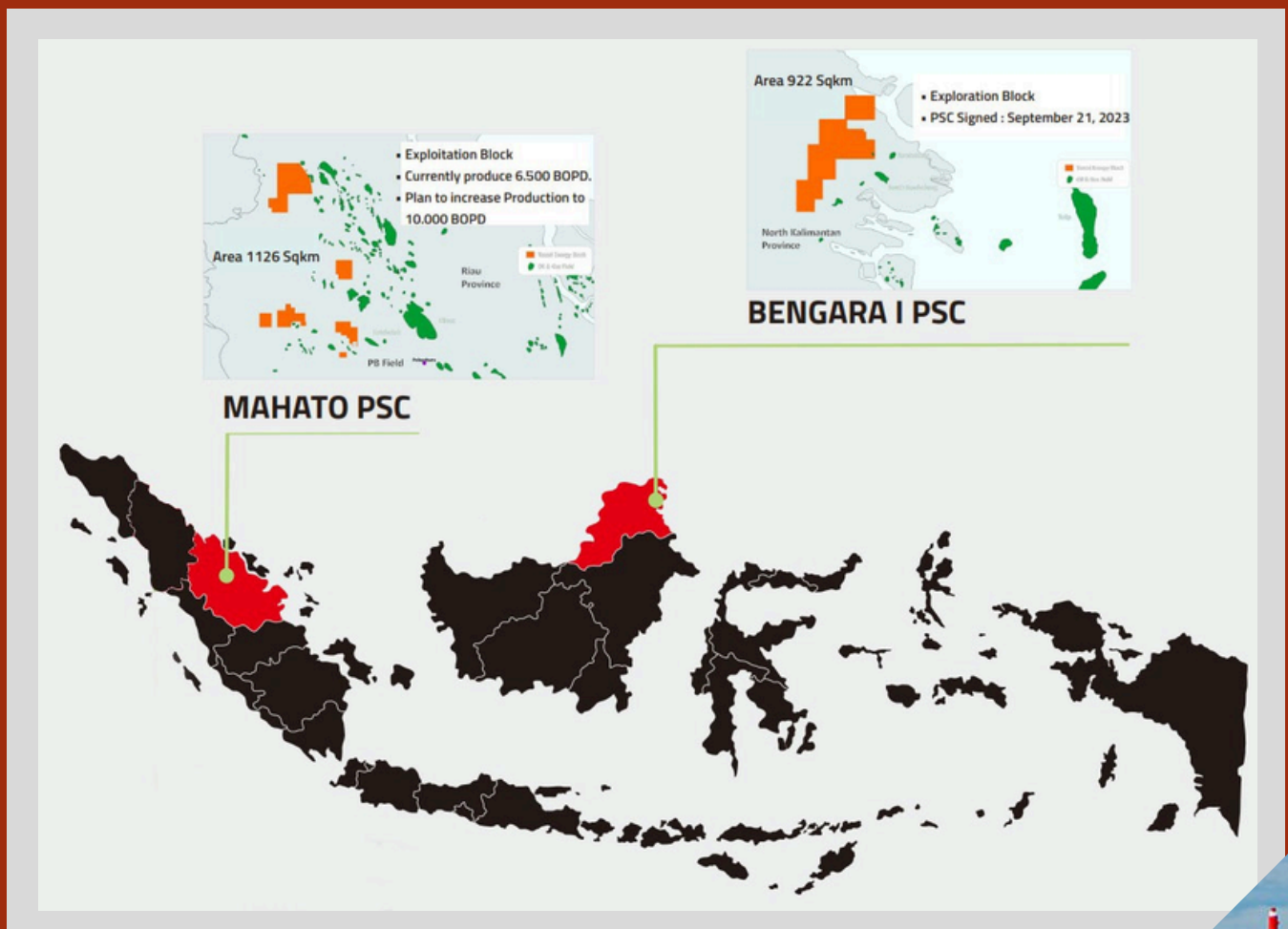
VP Commercial &
Government Relations



SULISTIONO K.

VP Legal

OUR OPERATIONS



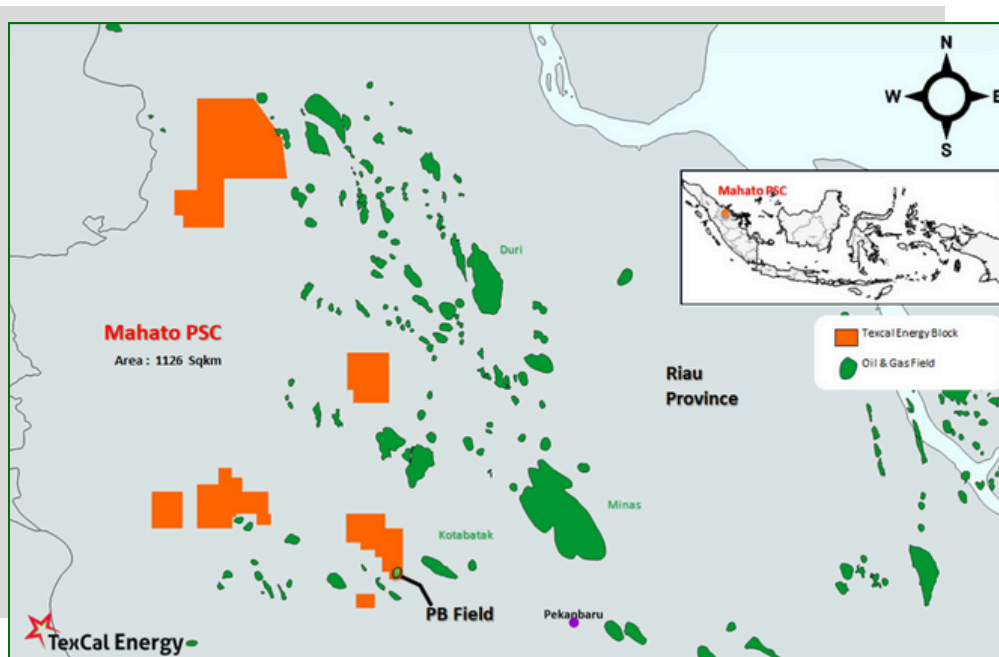
**OUR OPERATIONS
IN INDONESIA**



MAHATO PSC

The PSC Signed by July 20, 2012, has Drilled 30 wells out of 37 wells and currently produce 6.500 BOPD. Plan to increase Production to 10.000 BOPD Next Campaign of Development and Exploration Wells.

- Participating Interest.
 - Texcal Energy Mahato Inc. (72,25%).
 - Cue Energy Pty. Ltd. (11,25%)
 - Central Sumatra Energy Mahato Ltd (11,5%).
 - PT Riau Petroleum Mahato (5%)

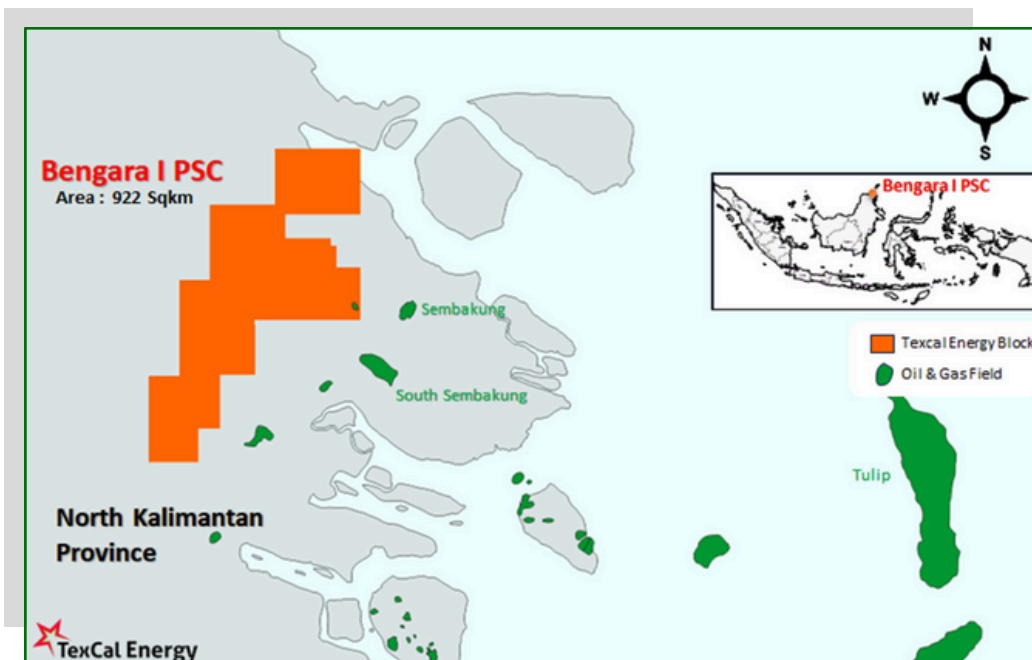


BENGARA PSC

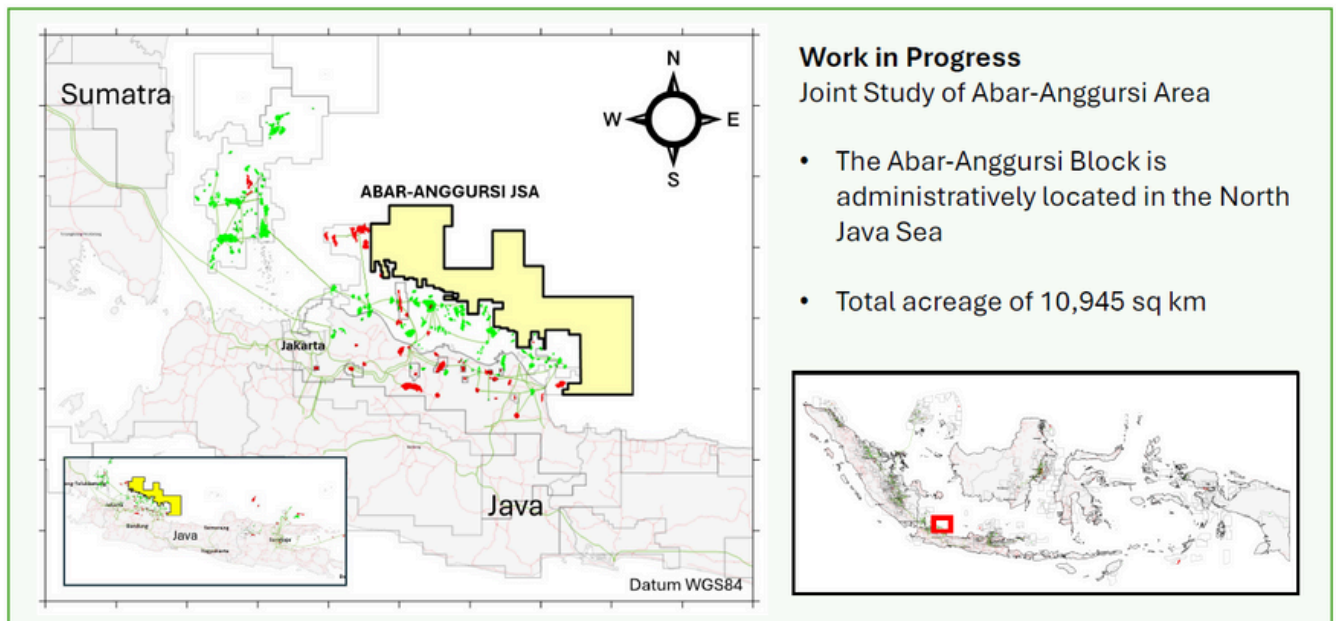
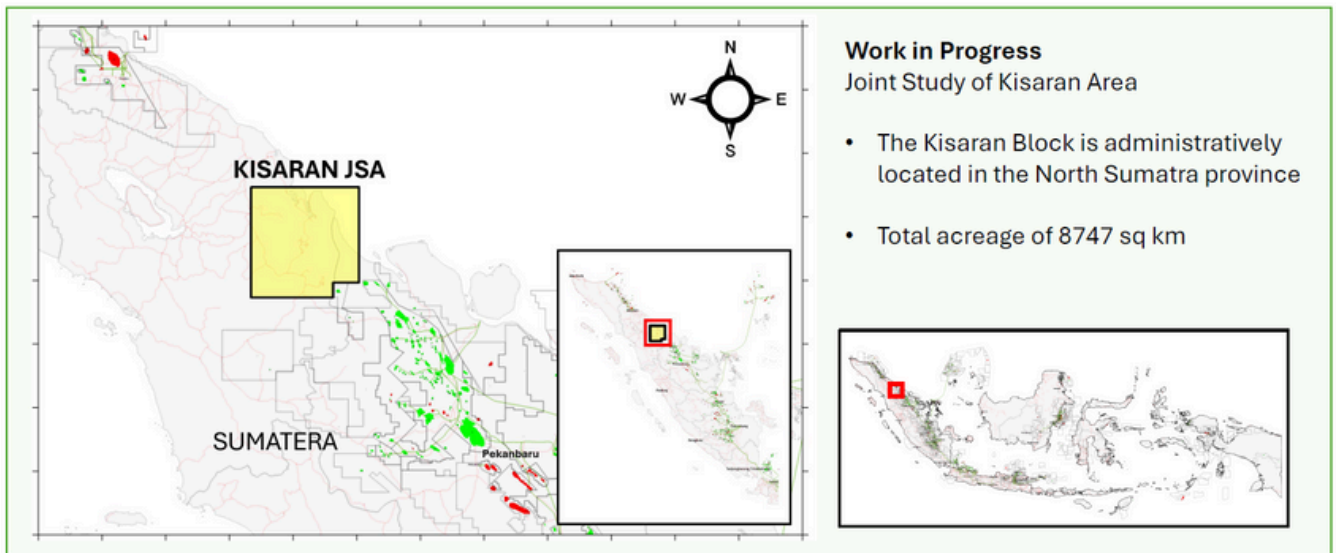
Currently on exploration phase.

The PSC Signed by September 21, 2023 with firm Commitment of 2 G&G Study, 1 Exploration Well and Work Commitment 1 G&G Study.

- Participating Interest:
 - PT Texcal Energy Bengara Indonesia (100%)



WORK IN PROGRESS



OUR JOURNEY

NOW

Total drilled 30 wells out of 37 wells with 6,500 BOPD in Q1 2025 with total production more than 4 million barrels (from January 2021 - now).

2022

Production reached 190% from target production in POD I

2012

PSC signed for Mahato Block on July, 20 2012

2023

PSC signed for Bengara I Block on September, 21 2023

2020

POD I approval
First Oil on December 20, 2020
Received the Fastest Field Discovery to Onstream Award



OUR **COMMUNITIES** **PROGRAMMES**

In Indonesia, our Social Communities Programmes support the communities in the areas of:



**Community
Health**



Education



Entrepreneurship



**Governance &
External Relations**

LET'S BUILD TOGETHER



CONTACT US :



(62-21) 2297 6715



www.texcalenergy.com



admin@texcalenergy.com



*Jl. Sultan Iskandar Muda No. 24 H, Arteri
Pondok Indah, Kebayoran Lama Selatan,
Kebayoran Lama, South Jakarta 12240*

